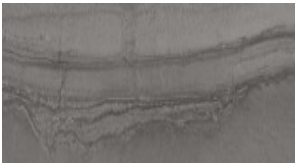


**metro** *surfaces*



**Absent**

**Porcelain**



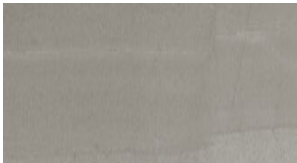
Carbon



Earth



Mist



Smoke

# Absent

# Porcelain

## SIZES & FINISHES

|                 |        |          |           |
|-----------------|--------|----------|-----------|
| 12x24           | 9.8 mm | Matte    | Rectified |
| 12x24           | 9.8 mm | Polished | Rectified |
| 2x2 Basketweave | 9.7 mm | Matte    | Rectified |

## TRIMS

|               |          |
|---------------|----------|
| 3x12 Bullnose | Matte    |
| 3x12 Bullnose | Polished |

## AVAILABLE SIZES



12x24



12x24



2x2  
Basketweave



3x12 Bullnose



3x12 Bullnose

## TECHNICAL SPECS

|                            |                        |
|----------------------------|------------------------|
| <b>Water Absorption</b>    | <.42                   |
| <b>Abrasion Resistance</b> | 4                      |
| <b>Scratch Hardness</b>    | 6                      |
| <b>Breaking Strength</b>   | ≥292                   |
| <b>Shade Variation</b>     | V3                     |
| <b>Usage</b>               | Floor                  |
| <b>Material</b>            | Porcelain              |
| <b>Product Type</b>        | Commercial/Residential |

