



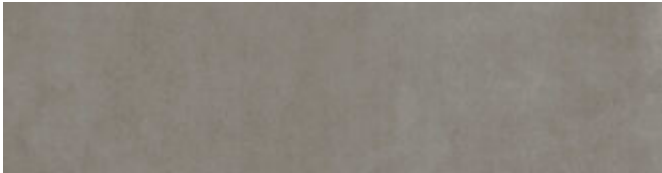
**Sky**

*metro surfaces*

# Colors



**Cloudsky**



**Greensky**




**Moonsky**

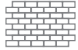


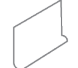


**Nightsky**

## Sizes

		Thickness	Pressed/ Rectified	Finish	SQ. FT./ Carton	Pieces/ Carton
	12x24	1/3"	Rectified	honed	15.751	8

## Trim/Mosaics

		Thickness	Finish	SQ. FT./ Carton	Pieces/ Carton
	12x12 stair tread	1/3"	honed	9.793	10
	12x24 3D mosaic	1/3"	honed	7.875	4
	12x24 design 4 mosaic	1/3"	honed	7.875	4
	1x2 design 5	1/3"	honed	4.896	5
	1x6 in corner	*	*	0.16	4
	1x6 out corner	*	*	0.16	4
	2x2 mosaic	1/3"	honed	4.896	5
	3x12 bullnose	*	*	3.634	15
	4x12 sky mix mosaic design 1	1/3"	honed	1.938	6
	6x12 cove base	*	*	3.876	8
	design 3 mosaic	1/3"	honed	9.793	10
	12x12 stair tread	1/3"	honed		

# Performance Characteristics

Water Absorption	Breaking Strength	Scratch Hardness	Chemical Resistance	Abrasion Resistance
≤.1%	≥400lbs	≥7	Resistant	4

Usage	Shade Variation	Product Type	DCOF
Floor	V2	porcelain	≥.60



Made in USA