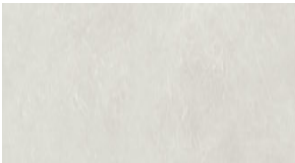


**metro** *surfaces*



**Zone**

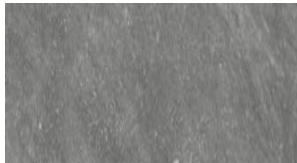
**Porcelain**



Winter White



Spring Grey



Autumn Grey



Summer Moss

# Zone

# Porcelain

## SIZES & FINISHES

|            |       |       |
|------------|-------|-------|
| 15x30      | 5/16" | Matte |
| 4x8        | 3/8"  | Matte |
| 5x30       | 5/16" | Matte |
| 8" Hex     | 5/16" | Matte |
| 2x2 Mosaic |       | Matte |

## TRIMS

|               |       |
|---------------|-------|
| 3x15 Bullnose | Matte |
|---------------|-------|

## AVAILABLE SIZES



15x30



4x8



5x30



8" Hex



2x2 Mosaic



3x15 Bullnose

## TECHNICAL SPECS

|                   |                        |
|-------------------|------------------------|
| Water Absorption  | <0.5%                  |
| Scratch Hardness  | 8                      |
| Breaking Strength | >275 lbs               |
| Shade Variation   | V4                     |
| Usage             | Floor/Wall             |
| Material          | Porcelain              |
| Product Type      | Commercial/Residential |

