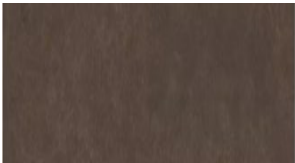


metro *surfaces*

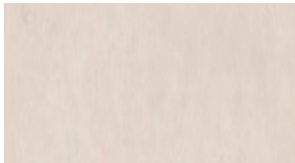


Artex

Porcelain



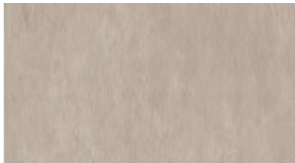
Espresso



Ivory



Midnight



Sand



Silver Grey



Tortora

Artex

Porcelain

SIZES & FINISHES

12x24	8 mm	Matte	Rectified
16x32	10 mm	Matte	Rectified
32x32	8 mm	Matte	Rectified
2x2 Mosaic		Matte	

TRIMS

3x12 Bullnose	Matte
6x12 Covebase	Matte

AVAILABLE SIZES



12x24



16x32



32x32



2x2 Mosaic



3x12 Bullnose



6x12 Covebase



Made in USA

TECHNICAL SPECS

Water Absorption	≤0.4%
Breaking Strength	≥400 lb/ft ²
Shade Variation	V2
Usage	Floor/Wall
Slip Resistance	DCOF Wet ≥0.42
Material	Porcelain
Appearance	Concrete/Stone
Product Type	Commercial/Residential

TECHNICAL NOTES

8 mm - Breaking Strength ≥300 lb/ft²

