

metro *surfaces*

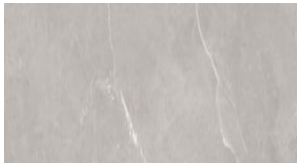


Keystone

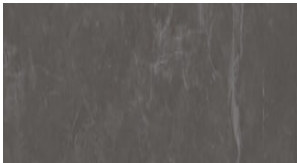
Porcelain



White



Gray



Nero

Keystone

SIZES & FINISHES

12x24 7.5 mm Satin

8x9 hex 8.0 mm Satin

TRIMS

AVAILABLE SIZES



12x24



8x9 hex

Porcelain

TECHNICAL SPECS

Water Absorption <0.5%

Abrasion Resistance 3-4

Scratch Hardness 7-8

Breaking Strength >275 lbs

Shade Variation V2

Usage Floor/Wall

Material Porcelain

Product Type Commercial/Residential



Made in USA

