

metro *surfaces*

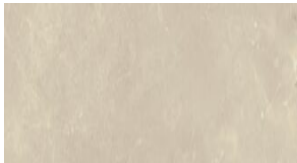


Keystone

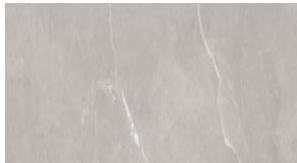
Porcelain



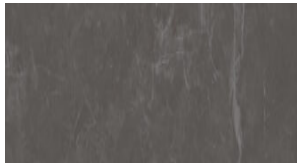
White



Bone



Gray



Nero

Keystone

SIZES & FINISHES

12x12		Satin	Pressed
12x24	7.5 mm	Satin	Pressed
8x9 hex	8.0 mm	Satin	Pressed

TRIMS

AVAILABLE SIZES



12x12



12x24



8x9 hex

Porcelain

TECHNICAL SPECS

Water Absorption	<0.5%
Abrasion Resistance	3-4
Scratch Hardness	7-8
Breaking Strength	>275 lbs
Shade Variation	V2
Usage	Floor/Wall
Slip Resistance	DCOF \geq 0.42
Recommended Grout Thickness	1/8"
Material	Porcelain
Product Type	Commercial/Made in the USA/Residential



Made in USA

