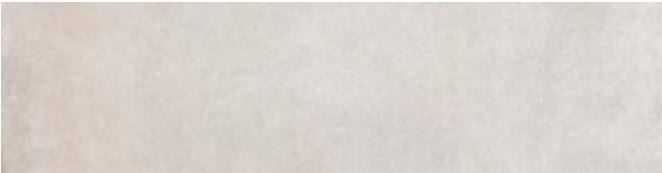




Durstone

metro surfaces

Colors



White



Taupe

Size(s)

	Thickness	Pressed/ Rectified	Finish	SQ. FT./ Carton	Pieces/ Carton
12x24	3/8"	Rectified	Matte		
24x48	3/8"	Rectified	Matte/Anti Slip		

Performance Characteristics

Water Absorption	Breaking Strength	Scratch Hardness	Chemical Resistance	Abrasion Resistance
<0.5%	≥ 250 LBS	7	Resistant	4

Usage	Shade Variation	Product Type	DCOF
Floor/Wall	V2	Porcelain	