

metro *surfaces*



Urbanstone

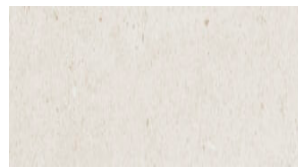
Ceramic



Black



Gris



Shell

Urbanstone

Ceramic

SIZES & FINISHES

12x24	7.55 mm	Satin	Pressed
1.5 x 2" Hex		Satin	Pressed

TRIMS

AVAILABLE SIZES



12x24



1.5 x 2" Hex

TECHNICAL SPECS

Water Absorption	< 3%
Abrasion Resistance	TBA
Scratch Hardness	TBA
Breaking Strength	TBA
Shade Variation	V2
Usage	Floor/Wall
Slip Resistance	DCOF >.042
Recommended Grout Thickness	1/8"
Material	Ceramic
Product Type	Residential

TECHNICAL NOTES

Exterior Floor Applications (including pool decking & other wet areas with minimal footwear) ≥ 0.60

