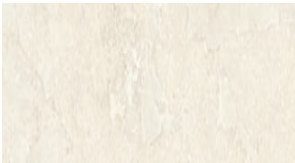


metro *surfaces*



Method Cross Cut

Porcelain



Fog



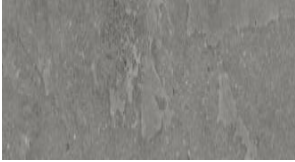
Jute



Mist



Fossil



Pumice

Method Cross Cut

Porcelain

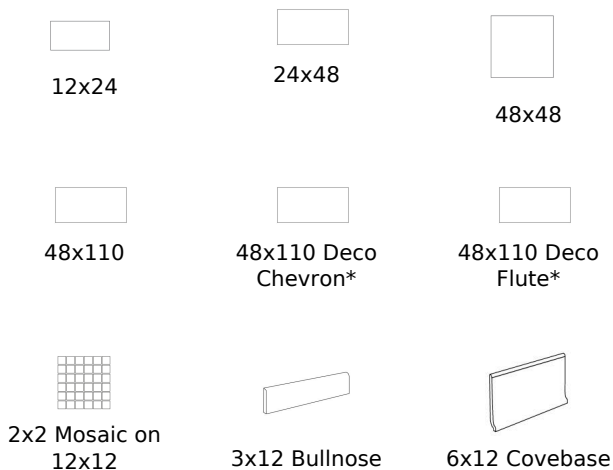
SIZES & FINISHES

12x24	8 mm	Matte	Rectified
24x48	8 mm	Matte	Rectified
48x48	8 mm	Matte	Rectified
48x110	6 mm	Matte	Rectified
48x110 Deco Chevron*	6 mm	Matte	Rectified
48x110 Deco Flute*	6 mm	Matte	Rectified
2x2 Mosaic on 12x12	8 mm	Matte	Rectified

TRIMS

3x12 Bullnose	Matte
6x12 Covebase	Matte

AVAILABLE SIZES



TECHNICAL SPECS

Water Absorption	≤0.5%
Abrasion Resistance	All Residential/Commercial
Breaking Strength	≥200 lbf 6 mm ; ≥300 lbf 8 mm
Shade Variation	V3
Usage	Floor/Wall
Slip Resistance	DCOF ≥0.42 WET
Material	Porcelain
Product Type	Commercial/Made in the USA

TECHNICAL NOTES

*Chevron/Flute 48x110 Decos only available in Fog and Mist colors. DCOF Outdoor >0.55 WET 2CM & GRIP

